

# The Royal School Armagh

Prospectus 2025

*"For The Increase of Learning and Good Manners"*



**bsa** | BOARDING  
SCHOOLS'  
ASSOCIATION

Leading  
Independent  
Schools



A Legacy of Excellence and Whole-Person Education

# Contents

<b>Welcome</b>	3	<b>Curriculum</b>	20
<b>The Board of Governors</b>	5	<b>Examination Results</b>	21 - 23
<b>History of the School</b>	6 - 7	<b>Learning &amp; Teaching</b>	24 - 25
<b>Ethos, Aims &amp; Mission</b>	8 - 9	<b>Extra &amp; Cocurricular Activities</b>	26
<b>Admission &amp; Pupil Numbers</b>	10	<b>Charity &amp; ASHA</b>	27
<b>The School Day</b>	11	<b>Music &amp; Drama</b>	28
<b>Term Dates</b>	12	<b>House System</b>	29
<b>Sample Year 8 Timetable</b>	13	<b>Uniform</b>	30
<b>Pastoral Care</b>	14	<b>Finance</b>	31
<b>Safeguarding</b>	16	<b>Availability of Policies &amp; Documents</b>	31
<b>Pupil Voice</b>	17	<b>Boarding</b>	36
<b>Careers &amp; Leavers Destinations</b>	18 - 20	<b>... and Finally</b>	39

# Welcome

Thank you for your interest in the Royal School, Armagh. The choice of a school is one of the most important decisions parents and children can make. The purpose of this prospectus is to provide you with relevant information to help you and your son or daughter make that decision. We are a unique school, historic with a modern outlook, with a strong local network and a vibrant international dimension.

At the Royal School, Armagh we aim to create a community of learning that is caring, with contented pupils who are encouraged in an atmosphere that is diverse and stimulating. We want pupils to grow into independent learners who will acquire meaningful qualifications as that creates optimal life opportunities.

We believe that real education extends beyond the classroom, and we encourage all our pupils to engage in the wide range of extra-curricular activities on offer. Although we hope this prospectus will provide much of the information you need there is much more available on our website: [www.royalschool.com](http://www.royalschool.com)

Additionally, you will be very welcome to visit the school on our annual Open Night or, if that is not possible, please contact the school to arrange a visit. You can do this by emailing us at [info@royalschool.com](mailto:info@royalschool.com) or by phoning us directly on **+44 (0) 28 37522807**.





# The Board of Governors

## FOUNDATION GOVERNORS

Governors elected by the Council of the Diocese of Armagh

The Most Revd. John McDowell,  
The Archbishop of Armagh,  
Primate of all-Ireland (Chairman)  
Very Revd. Shane Forster,  
Dean of Armagh\*  
Revd. M. Kingston  
Dr P. Reaney  
Mr M. Dickson\*

Governors elected by the General Assembly of the Presbyterian Church in Ireland

Revd. E. P. Gamble (Vice-chairman)\*  
Revd. A. McNeely  
Mr W. H. Scott

Governor elected by the Conference of the Methodist Church in Ireland

Mr H. McMullan

## CO-OPTED GOVERNORS

Mr T. Edgar  
Mrs K. Taylor\*  
Mr I. Lewis\*  
Mr D. R. D. Mitchell  
Rt Hon. the Lord Kilclooney  
Mrs K. Reaney\*

## GOVERNORS APPOINTED BY THE DEPARTMENT OF EDUCATION AND THE EDUCATION AUTHORITY

Department of Education  
Mr I. Hutchinson\*  
Mr R. Wilson

Education Authority  
Mr I. McCall\*  
Mrs S. Ross

## PARENT GOVERNORS

Dr K. King  
Mr N. McCool  
Mr B. Taylor

## TEACHER GOVERNORS

Mr S. Cardwell  
Mrs G. L. Montgomery

## HEADMASTER

(Non-voting)  
Mr G. G. W. Montgomery\*

## SECRETARY TO THE BOARD

Mr S. T. H. McConnell\*

\* Denotes a member of the Management Committee



"For The Increase of Learning and Good Manners"

## History of the School

The Royal School Armagh is the second oldest school in Ireland and owes its existence to a 1608 decree of King James I to establish the school. The school was originally located outside Armagh and moved to its present location on College Hill in 1774. Records show that by 1833 there were only 19 pupils registered in the school, but by 1849 this had risen to 63, making the school the largest of the Royal schools in Ulster. By 1879, there were 13 teachers for 111 pupils. This allowed the Inspector of Grammar Schools to write in 1881 that he considered Armagh Royal **"the most successful boarding school in the north of Ireland"** and believed Armagh was probably the most suitable place for a Royal School in Ireland.

The 20th century saw the school evolve from a boys-only school to a co-educational establishment through amalgamation with Armagh Girls' High School. Since the amalgamation, the School has steadily increased in numbers and currently has a population of over 800 pupils. It ranks as one of the top boarding and day Schools in Ireland with a boarding community of up to 100 boarders.

We provide an environment where children are safe and happy and can develop in a structured setting, learning to live and work with others of similar ages. Traditional values are at the heart of all our work and over the years we have developed a culture of excellence across our Secondary and Boarding Departments that has provided fantastic opportunities for all our pupils.

Whilst we respect our past, we also embrace the future with expectation.



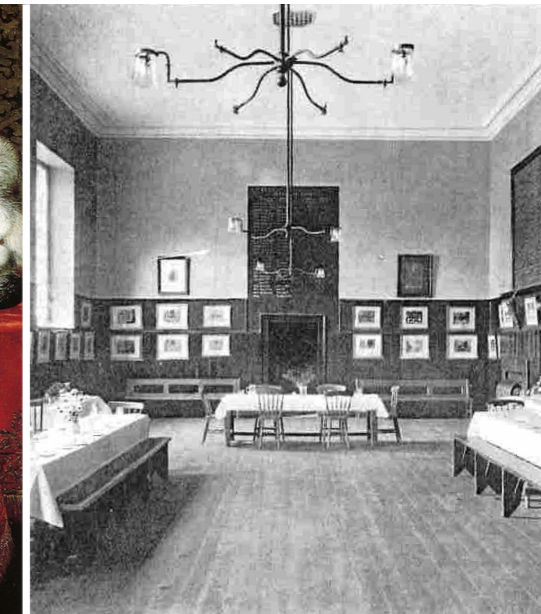
Their Majesties, The King and Queen, pictured greeting pupils and staff from The Royal School, Armagh, during their first visit to Northern Ireland following the Coronation in May 2023.



The Headmaster's House, Circa 1900



His Majesty, King James I (1566 - 1625)  
Founded The School by Royal Decree in 1608



The Dining Hall, Circa 1900

# Ethos, Aims & Mission

The Royal School, Armagh is a historic school founded by Royal decree of King James I in 1608. It was granted Letters Patent by King Charles I in 1627 with the specific mission of “the increase of Learning and Good manners”. Since that time, these twin aims of facilitating learning for all and encouraging all pupils to realise their potential and develop their character have been central to everything we do. We are proud of our grammar school heritage and believe in academic excellence for staff and pupils alike. True to our Christian foundation, we encourage a spirit of respect and cooperation and seek to support those who are less fortunate, locally and internationally. Pupils are encouraged to contribute to school and community life.

To promote its ethos and mission, the school has identified eight core aims to provide a sound learning environment for pupils which will:

1. Introduce them to a breadth of experience and a range and depth of knowledge which is compatible with their abilities, interests, aspirations and needs.
2. Make them aware of the kind of society in which they live and are going to live.
3. Help the development of essential skills and the understanding of relevant concepts with the purpose that they should be encouraged to realise their full potential at each stage of their development and in all of the activities in which they are involved. Essential skills will include the use of Information Technology - the development of which will be part of both the teaching and learning process.
4. Encourage them to take a full and active part in all activities of the school outside the formal course of academic study.
5. Assist the formation of those positive attitudes which pupils will need to contribute to society as it is now and as it may develop.
6. Have concern for their personal welfare, treat them as individuals and encourage the development of personal qualities such as reliability and self-discipline. In relation to welfare, the school will have concern with the health, physical, intellectual, spiritual, emotional, social and behavioural development of the pupils. The school will also be actively involved in protecting the child against harm or neglect. For boarding pupils, the aim will be to provide pupils with a quality of life both in the day school and in boarding which is underpinned by the

basic values of privacy, dignity, independence, choice, rights and responsibilities, fulfilment and involvement.

7. Reinforce the role of parents and other agencies in developing sound, moral and social qualities in preparation for adulthood.
8. Encourage them to view education as a lifelong exercise so that they leave school equipped with the enthusiasm and skills to continue the process.

The school’s ethos and mission are summed up in three words: Quality (in all that we do and seek to be) Character (and action) and Care (for each other, our property and the environment).

## Mission Statement

**“The Royal School Armagh aims to provide its pupils with an education which in its wholeness will enable them to achieve their full potential in academic, social, moral and spiritual terms. The values of the School, both implicitly and explicitly, reflect and are informed by the reformed tradition of the Christian faith. The School warmly welcomes the presence of pupils and staff of other Christian traditions, other world faiths and those with no religious convictions”.**



# QUALITY

# CHARACTER

# CARE

# Admissions & Pupil Numbers

The Royal School is a selective, co-educational, voluntary grammar school that provides day and boarding provision for pupils aged 11 to 19. Pupils joining the school in Year 8 normally sit the entrance test, which is currently administered by the Schools' Entrance Assessment Group (SEAG). Information about this test is available on the SEAG website.

The school's admission number into Year 8 is 100. After the release of the entrance test results, the first 80 places will be allocated on the basis of the applicant's score. A maximum of 15 places are reserved for boarders.

The remaining 'day places' from the admissions number of 100 are allocated from a pool of 20 applicants. Applicants in the pool are allocated to the remaining places upon the application of the 'tie-breaker' criteria. Detailed information about the admissions criteria is available on the school website.

Prospective boarding pupils are interviewed to establish their suitability for boarding life and may be asked to sit our own tests to establish their level in English and mathematics.

## Sixth Form

Each year we welcome into Sixth Form pupils who took their GCSEs at another school. The minimum entry requirement is currently 12 points at GCSE with B grades or above in each of the subjects wishing to be studied at A Level or equivalent.



# The School Day

We are committed to excellent attendance and punctuality as this has a direct impact on pupil attainment. The school opens at 8.40 am and pupils are expected to be in school by 8.40 am and in their form rooms by 8.50 am. All pupils are encouraged to strive for 100% attendance. Schools are no longer permitted to authorise holidays during the school term.

## Structure of the Day


Time	Event
08:40	Arrival
08:50 – 09:10	Registration & Morning Assembly
09:10 – 09:45	Period 1
09:45 – 10:20	Period 2
10:20 – 10:35	Break
10:35 – 11:10	Period 3
11:10 – 11:45	Period 4
11:45 – 12:20	Period 5
12:20 – 12:55	Period 6*
12:55 – 13:30	Period 7*
13:30 – 14:05	Period 8*
14:05 – 14:40	Period 9
14:40 – 15:15	Period 10

\*Lunch is taken either  
Period 6, 7 or 8

Pupils not participating in extra-curricular activities are expected to leave school as soon after 3:15 as possible.

# Term Dates

The term dates for 2025–26 are listed below. Please note that these dates are subject to change. Any updates will be communicated through our website and social media channels.



**TERM DATES 2025 / 2026**

**Michaelmas Term: Tuesday 26 August – Friday 19 December**  
 Bank Holiday: Monday 25<sup>th</sup> August, school closed  
 Half Term: Monday 27 October – Friday 31 October (inc)

**Hilary Term: Monday 05 January – Friday 27 March**  
 Half Term: Tuesday 10 February – Friday 13 February (inc)  
 St Patrick's Day: Tuesday 17 March, school closed

**Trinity Term: Monday 13 April – Tuesday 30 June**  
 Bank holiday: Monday 04 May, school closed

**Baker Days:**

1. Thursday 14 August\*
2. Tuesday 19 August
3. Wednesday 20 August
4. Thursday 21 August
5. Friday 22 August

\*Relevant staff only required in school as notified.

**School Development Days: No pupils**  
**SDD 1: Monday 03 November (TBC)**  
**SDD 2: Friday 16 January**  
**SDD 3: Monday 09 February**  
**SDD 4: Monday 25 May**  
 (one SDD still to be determined)

# Sample Year 8 Timetable

Pupils attend whole school Assemblies on Tuesday and Thursday each week. Year Assemblies and House Assemblies take place once per month on a Friday.

		MON	TUE	WED	THU	FRI
08:50 - 09:10	REG	REGISTRATION	REGISTRATION	REGISTRATION	REGISTRATION	REGISTRATION
09:10 - 09:45	1	PE	SCIENCE	GEOGRAPHY	HISTORY	MATHS
09:45 - 10:20	2	PE	SCIENCE	ENGLISH	FRENCH	HISTORY
10:20 - 10:35	BREAK	BREAK	BREAK	BREAK	BREAK	BREAK
10:35 - 11:10	3	TECHNOLOGY	FRENCH	ART & DESIGN	FRENCH	MUSIC
11:10 - 11:45	4	TECHNOLOGY	FRENCH	ART & DESIGN	MATHS	MUSIC
11:45 - 12:20	5	HOME ECONOMICS	LLW	RELIGIOUS STUDIES	SCIENCE	GEOGRAPHY
12:20 - 12:55	6	HOME ECONOMICS	LUNCH	SCIENCE	SCIENCE	LUNCH
12:55 - 13:30	7	FRENCH	ICT	FRENCH	GEOGRAPHY	RELIGIOUS STUDIES
13:30 - 14:05	8	LUNCH	ENGLISH	LUNCH	LUNCH	GAMES
14:05 - 14:40	9	ENGLISH	HISTORY	MATHS	ICT	GAMES
14:40 - 15:15	10	ENGLISH	MATHS	MATHS	ENGLISH	GAMES

# Pastoral Care

Meeting the needs of the individual learner is essential and we have developed a structure to promote pupil development and encourage positive relationships between pupils and with staff.

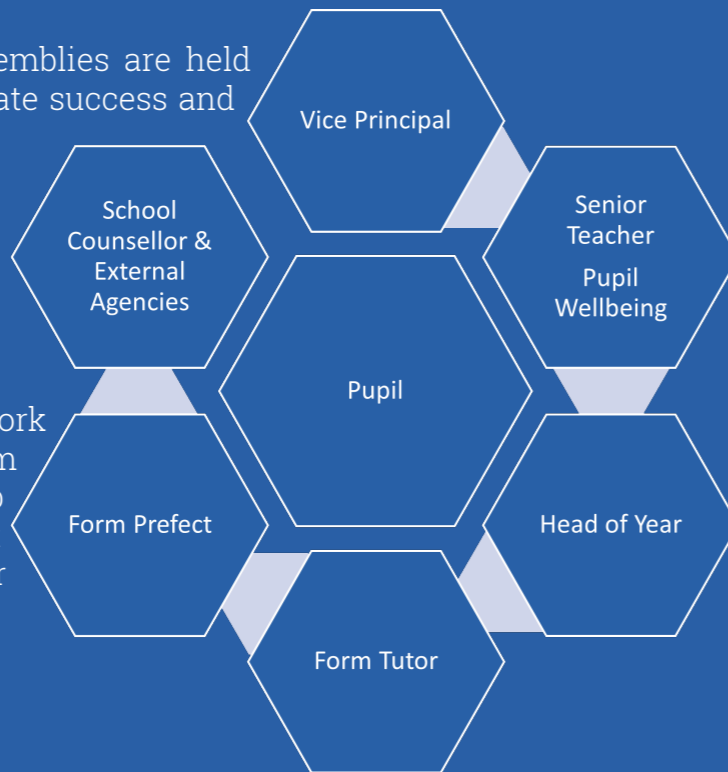
Our objective is to provide a caring, supportive, and safe environment where each young person is known and cared for as an individual. Pastoral care is about the wellbeing of pupils, concern for their health, physical, emotional, social, and behavioural development and protecting them from harm. Our pastoral care is underpinned by a Pastoral Care Policy. Each year group is divided into form classes with a Form Tutor who is the pupils' daily point of contact. Each Form Class is assigned a Form Prefect to assist with settling in and other issues that might arise.

Throughout the week a range of assemblies are held to build a sense of community, celebrate success and promote the school's values.

## STAR Programme

*(Setting Targets Achieving Results)*

The STAR Programme aims to work closely with pupils who can benefit from additional focused work, either to help them reach existing targets or to set and reach new and ambitious goals for our gifted and talented pupils.





# Safeguarding

Safeguarding is more than child protection. Safeguarding begins with preventative activity, which enables young people to grow up safely and securely in circumstances where their development and wellbeing is not adversely affected. Our preventative curriculum is designed to provide our pupils with the best and most up to date advice and guidance to help them lead safe lives and make wise choices. The preventative curriculum is supported by regular visits from speakers and outside agencies.

Child Protection acts to ensure that young people are protected from harm. The Designated Teacher for Child Protection is Mrs Montgomery and she works alongside the Deputy Designated Teachers on the Safeguarding Team. All staff have regular Safeguarding Training, many staff have up to date first aid training and there are a number of External Automated Defibrillators (AEDs) around the grounds. In addition to this we have a staffed sick bay for pupils who feel ill during the school day.

We are an Operation Encompass school. This means the police will share information with an appropriately trained member of our staff in the event that they become involved in an incident that is unhealthy or unsafe between a young person and someone charged with caring for them. Operation Encompass significantly strengthens our safeguarding procedures.



# Pupil Voice

Listening to the views and experiences of pupils is key to building a happy and successful school. We take many opportunities to encourage the pupil voice.

The School Council is elected annually by pupils and meets regularly to consider a broad range of issues in school. The council is consulted on policies and initiatives with regular reports on its business to the school Senior Leadership Team.

There are regular meetings of the pupil pastoral and learning and teaching focus groups as well as a pupil focus group in each year.



# Careers

A good school is always focused on what happens to its pupils after they leave! We want to help our pupils acquire meaningful qualifications, but also to develop those important skills that will enhance their employability. Careers advice and guidance is offered throughout school and every Sixth Form pupil has an individual UCAS advisor who will guide them through the process of applying for university. They also have the opportunity for mock interviews. Most leavers proceed to their first preference choice of university, including Oxford and Cambridge.

# Leavers Destinations

In 2024 pupils left Sixth Form for the following destinations and courses. Please note we have listed each course at each institution once only.

## **Birmingham City University**

Law with Business  
Law

## **Bristol, University of the West of England**

Computer Science  
Occupational Therapy

## **Calvin Precision Engineering**

Engineering

## **Cardiff Metropolitan University**

Speech and  
Language Therapy

## **Cardiff University**

Economics

## **College of Agriculture, Food and Rural Enterprise**

Agriculture and Technology  
Food Innovation and  
Technology  
Food Innovation  
Management

## **Durham University**

Anthropology and  
Archaeology

Finance

Mathematics

Modern Languages and  
Cultures

## **Employment / App**

Engineering

Farming

Mechanic

## **European University - Vienna**

International Business

## **Harper Adams University**

Agriculture with Livestock  
Production Science  
Applied Animal Science

## **Harper and Keele Veterinary School**

Veterinary Medicine and  
Surgery

## **Liverpool John Moores University**

Pharmacy

## **Middlesex University**

Midwifery

## **MJN Marine Newry**

Quantity Surveying

## **Nottingham Trent University**

Computer Science

## **Oxford Brookes University**

Media, Journalism and  
Publishing

## **Queen's University Belfast**

Advanced Accounting  
Agricultural Technology  
Agricultural Technology with  
Professional Studies  
Applied Mathematics and  
Physics

Biochemistry with  
Professional Studies

Business Information

Technology including

Professional Experience

Criminology

Environmental and Civil  
Engineering

Financial Risk Management

Geography

History and International

Relations

International Relations and

Politics

Law

Medicine

Midwifery

Music Performance

Pharmacy

Physics

Professional Nursing

Software Engineering

## **Robert Gordon University**

Nursing (Adult)

## **Rosco Engineering**

Engineering

## **Royal Agricultural University**

Agriculture

## **Sligo**

Electrical

## **SOAS University of London**

LLB Law

## **SRC**

Construction & Built

Environment

Joinery

Engineering

## **Stranmillis University College**

Physical Education and Sport  
Technology & Design with  
Education

## **University College London**

Biomedical Engineering  
Biomedical Sciences

## **Ulster University**

Accounting and Finance  
Accounting and Marketing

Animation

Architecture

Art and Design

Biomedical Engineering

Business Economics

Business Studies

Communication

Management and Public

Relations

Computer Science (Software  
Systems Development)

Computing Science

Computing Technologies

Diagnostic Radiography and  
Imaging

Environmental Science

Finance and Investment  
Management

Global Business

Law

Law with Marketing

Marine Science

Marketing

Nursing

Politics & International  
Studies

Social Policy with

Criminology

Social Policy with Sociology

## **University of Aberdeen**

Medicine

## **University of Cambridge**

Chemical Engineering and  
Biotechnology

Human, Social, and Political  
Sciences

Medicine

## **University of Dundee**

Biochemistry

Biomedical Sciences

English

Microbiology

### University of Exeter

Classical Studies and  
Philosophy with Study  
Abroad

International Relations with  
Employment Experience

### University of Lincoln

Pharmaceutical Science with  
Business Management

### University of Liverpool

Bioveterinary Science  
International Relations  
Veterinary Science

### University of Manchester

Accounting and Finance

### University of Nottingham

Animal Science

### University of Oxford

Law

### University of Southampton

Aeronautics and  
Astronautics / Spacecraft  
Engineering

Computer Engineering with  
Industrial Studies

### University of Strathclyde

Speech and Language  
Pathology

### University of Worcester

Physiotherapy

### UWE Bristol

Occupational Therapy



## Curriculum

The Royal School provides a broad and balanced curriculum to all pupils and takes into consideration their individual strengths and interests with the essential subjects of English, mathematics and science remaining at the core of our provision. All pupils have access to a minimum of eight GCSE qualifications. There is also a very real focus on the humanities subjects and Modern Foreign Languages. The Royal School is proud to offer a grammar school curriculum that matches the abilities and aspirations of its pupils, fulfils the ambitions of parents/guardian for their children and meets the requirements and expectations of further education providers and employers.

## Homework

Homework is still seen as an important tool to consolidate learning, to develop independent learners and encourage further progress. All subject areas are expected to set homework each week and to return it with helpful feedback. In some subjects, a longer project might be set which will last for a number of weeks.

# GCSE Examination Results 2024

## GCSE Results (% Cumulative)

Subject	Entries	A*	A	B	C*	C	D	E	F	G	U
Agriculture	16	0	62.5	87.5	100	100	100	100	100	100	100
Art & Design	9	33.3	44.4	66.7	77.8	88.9	88.9	100	100	100	100
Biology	48	25	79.2	95.8	100	100	100	100	100	100	100
Business Studies	50	4	34	60	76	84	96	100	100	100	100
Chemistry	48	12.5	66.7	93.8	97.9	97.9	100	100	100	100	100
Chinese	2	50	100	100	100	100	100	100	100	100	100
Design and Technology	34	8.8	47.1	85.3	88.2	97.1	100	100	100	100	100
Double Award Science	116	11.2	34.5	61.2	79.3	91.4	97.4	100	100	100	100
English Language	108	23.1	62	87	98.1	100	100	100	100	100	100
English Literature	27	48.1	92.6	100	100	100	100	100	100	100	100
French	44	9.1	36.4	63.6	75	90.9	100	100	100	100	100
Geography	36	13.9	61.1	83.3	86.1	94.4	100	100	100	100	100
History	55	23.6	67.3	78.2	87.3	92.7	98.2	100	100	100	100
Home Economics	19	31.6	63.2	68.4	84.2	89.5	100	100	100	100	100
Information Technology	28	17.9	57.1	75	82.1	85.7	89.3	100	100	100	100
Mathematics Further	55	21.8	74.5	98.2	100	100	100	100	100	100	100
Mathematics	107	23.4	75.7	97.2	98.1	100	100	100	100	100	100
Music	13	23.1	61.5	92.3	100	100	100	100	100	100	100
Physics	48	18.8	79.2	100	100	100	100	100	100	100	100
Psychology	13	15.4	84.6	84.6	84.6	100	100	100	100	100	100
Religious Studies	106	29.2	60.4	73.6	80.2	84	91.5	97.2	98.1	99.1	100
Spanish	16	37.5	62.5	93.8	100	100	100	100	100	100	100
Sport/PE Studies	28	28.6	67.9	75	85.7	96.4	100	100	100	100	100
Statistics	32	6.3	37.5	75	93.8	93.8	93.8	96.9	96.9	96.9	96.9

## GCSE Results Summary

% Entered for 7 or more subjects	98.00	% Achieving grades A* - C in 7 or more subjects	91.43
% Entered for 5 or more subjects	98.00	% Achieving grades A* - C in 5 or more subjects	94.29
% Achieving no GCSEs	0		



# GCE Examination Results 2024

## GCE Results (% Cumulative)

Subject	Entries	A*	A	B	C	D	E	U
Agriculture (BTEC)	15	60	100	100	100	100	100	100
Art & Design	4	50	50	50	100	100	100	100
Biology	34	20.6	29.4	64.7	82.4	94.1	97.1	97.1
Business Studies	40	0	7.5	20	57.5	85	95	95
Chemistry	25	32	44	84	92	96	100	100
Chinese	5	0	80	100	100	100	100	100
Computer Studies/Computing	10	0	20	50	70	90	90	90
Design and Technology	8	25	50	62.5	100	100	100	100
Drama	2	0	50	100	100	100	100	100
Engineering (BTEC)	17	17.6	52.9	52.9	94.1	94.1	100	100
English Literature	11	18.2	45.5	81.8	100	100	100	100
French	10	10	30	60	70	100	100	100
Geography	21	4.8	38.1	61.9	85.7	95.2	100	100
German	1	100	100	100	100	100	100	100
Health & Social Care	16	0	12.5	75	93.8	100	100	100
History	21	9.5	14.3	47.6	76.2	95.2	100	100
Home Economics	8	0	12.5	25	37.5	100	100	100
Information Technology	6	16.7	33.3	83.3	100	100	100	100
Mathematics Further	6	83.3	100	100	100	100	100	100
Mathematics	46	23.9	54.3	73.9	84.8	93.5	97.8	97.8
Music	5	0	20	60	100	100	100	100
Physics	17	11.8	52.9	70.6	70.6	76.5	94.1	94.1
Politics	16	6.3	12.5	50	81.3	93.8	93.8	93.8
Religious Studies	13	15.4	30.8	69.2	92.3	100	100	100
Sociology	14	0	0	21.4	57.1	85.7	92.9	92.9
Spanish	6	16.7	66.7	100	100	100	100	100
Sports Science	15	0	13.3	33.3	46.7	86.7	93.3	93.3
Travel and Tourism (BTEC)	14	14.3	50	50	71.4	71.4	100	100

Foreat Armaghia



# Learning & Teaching

We offer a wide range of GCSE and GCE courses to cater to diverse interests and aspirations. Detailed information about each course is available on our website in the 'Departments' section.

## GCSE Courses Offered

- |                       |                        |
|-----------------------|------------------------|
| Agriculture           | History                |
| Art & Design          | Home Economics         |
| Biology               | Information Technology |
| Business Studies      | Mathematics (Further)  |
| Chemistry             | Mathematics            |
| Chinese               | Music                  |
| Design and Technology | Physics                |
| Double Award Science  | Psychology             |
| English Language      | Religious Studies      |
| English Literature    | Spanish                |
| French                | Sport/PE Studies       |
| Geography             | Statistics             |



## A Level and BTEC Courses Offered

- |                                |                        |                           |
|--------------------------------|------------------------|---------------------------|
| Agriculture (BTEC)             | Engineering (BTEC)     | Mathematics               |
| Art & Design                   | English Literature     | Music                     |
| Biology                        | French                 | Physics                   |
| Business Studies               | Geography              | Politics                  |
| Chemistry                      | German                 | Religious Studies         |
| Chinese                        | Health & Social Care   | Sociology                 |
| Computer Studies/<br>Computing | History                | Spanish                   |
| Design and Technology          | Home Economics         | Sports Science            |
| Drama                          | Information Technology | Travel and Tourism (BTEC) |
|                                | Mathematics (Further)  |                           |



# Extra & Co-curricular Activities

The holistic development of every young person is encouraged by engagement in extra-curricular activities. Our hope is for every pupil to be immersed in an exciting programme of enrichment activities that suit their interests and needs. Pupils can enjoy after school clubs across a vast range of areas of interest from birdwatching to taekwondo!

Educational visits and trips play a huge part in our school life. Pupils enjoy a range of travel opportunities such as visiting Iceland to view glaciers and volcanic features, hockey and rugby tours, the Scripture Union trip to Denmark, history trips to Germany, the annual ski trip and the languages trip to Spain or France.

Team sports flourish at the Royal School and we are particularly renowned for our success in hockey and rugby.

- |                       |                           |                   |
|-----------------------|---------------------------|-------------------|
| Army Section (CCF)    | Cybersecurity Competition | Library Committee |
| Athletics             | Dance Club                | Netball           |
| Badminton             | Debating Society          | Orchestra         |
| Bar Mock Trial        | Duke of Edinburgh Award   | Orienteering      |
| Blogging & Media Team | Scheme (Silver & Gold)    | Peer Tutoring     |
| Books Club            | Equestrian Club           | Rugby             |
| Chamber Choir         | E-Sports Club             | Running Club      |
| Chamber Orchestra     | Flying (CCF Air Section)  | Scripture Union   |
| Charity Club          | Geography Club            | Ski Trip          |
| Chess Club            | Girls' Football           | Tae-Kwondo        |
| Choir                 | Girls' Rugby              | Tennis            |
| Cookery Club          | Hill Walking Club         | War Games Society |
| Cricket               | Hockey                    | Wildlife Club     |
| Cross Country Club    | Junior Drama Club         | Writing Club      |

...and much more

# Charity & ASHA

We believe that encouraging our pupils to put service to others at the centre of what they do develops responsible young people with rounded character. A range of charity activities is ongoing throughout the year while biennially a team of senior pupils visits New Delhi as part of our signature ASHA charity project.



Members of the ASHA team pictured with Mr. Shiv. Kumar, Education Officer with ASHA

# Music and Drama

Music and Drama has a long-standing tradition at the school and continues to thrive and grow in popularity. There is a Junior Choir and a Senior Choir, as well as Chamber Choirs, School Orchestra and Band. The annual Festival of Nine Lessons and Carols is one of the musical highlights each year, taking place in St. Patrick's Cathedral, Armagh. There is one major dramatic society theatrical performance biennially, with recent productions having included Calamity Jane, Annie, Oliver and Beauty and the Beast.



# House System

The extra curricular and sporting life of school is complemented by the house system. This is a vibrant part of the pastoral system which develops a sense of community and healthy competition within school and across year groups.

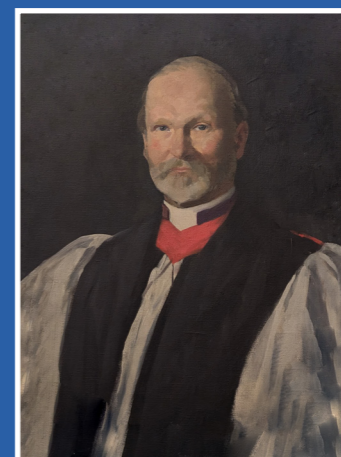
Each pupil is assigned to one of four houses which are named after previous archbishops of Armagh who played a particularly significant role in the development of school. Each house is led by a member of staff who works alongside house captains to organise activities. House assemblies are held regularly. House trophies are awarded at the end of the year and on Speech Night.



**Armstrong**  
**John Ward**



**Beresford**  
**John George**



**d'Arcy**  
**Charles Frederick**



**Rokeby**  
**Richard Robinson**

# Uniform

All pupils must wear the uniform appropriate to their year group. This ensures conformity, but more importantly, a sense of belonging to the school community. There is a Uniform Shop at the School, which is operated by a limited company trading as Royal School Armagh Limited and is located in the 'Old Building', where there is plenty of parking space.

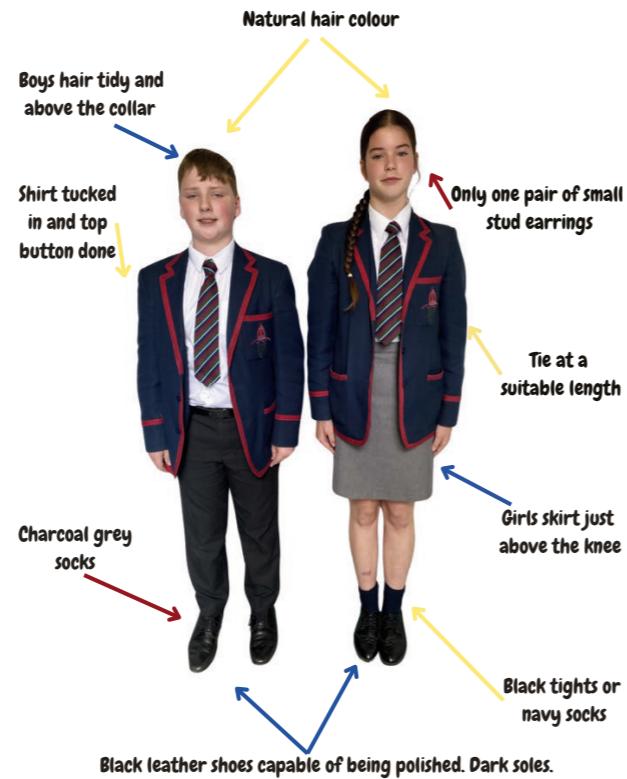
## Normal opening hours during term time:

Each Monday, Wednesday and Friday, from 12.30 pm – 4.30 pm.

**Additional opening times:** Each Monday, Wednesday and Friday during July and August from 9.00 am to 4.30 pm or at other times by appointment for new pupils.

The school uniform and sportswear are stocked in the shop.

Telephone **028 37522831** or email: [shop@royalschoolarmagh.com](mailto:shop@royalschoolarmagh.com)



# Finance

All pupils admitted to the School (except in the case of pupils who are not resident in the U.K. or the Republic of Ireland) will not be required to pay Tuition Fees. Annual Fees which are charged to all pupils are a Capital Fee (currently £140 per annum) which is used to cover the costs of maintaining the school site and for renovations and a school donation (currently £185 per annum) to cover operational and ancillary costs not covered by the Department of Education.

## Payment Methods

Fees are charged termly in advance, in equal amounts; extras are charged in arrears. Each invoice must be paid in full by the first day of term. Other methods for payment of fees by instalments are available; details can be obtained from the Finance Office.

A full term's notice is required when removing a pupil from the school or a term's fee in lieu will be due and payable.

# Availability of Policies & Documents

School policies are placed on our website or can be made available at the school for inspection by parents.

Other documents, including inspection reports and Department of Education circulars, can also be made available on request.











## One of the top boarding schools in Ireland

Our boarding community is at the very core of the School and has been for over four hundred years and we are proud to be the second oldest co-educational day and boarding school on the island of Ireland. The Royal School is one of the best resourced co-educational boarding schools in Northern Ireland and recent upgrading and improvement has included the provision of a dedicated Sixth Form House adjacent to the School.

The School's Boarding Department offers superb value for money and welcomes pupils from all over the island of Ireland and overseas. We strive to ensure that there is a family atmosphere in the Boarding Department by providing a **"home from home"** which we feel is important for children living away from home. Boarding at the Royal School allows pupils to benefit from all that the School has to offer, with the companionship and life skills that come from living with others.

The Boarding Department adds a cherished international dimension to the daily life of the School. With most pupils being day pupils living in and around the Armagh area, our boarders also make strong friendships outside of the boarding community. Many Sixth Form pupils choose to board to prepare for university, to build confidence and independence. Boarding options are four, five or seven nights per week. There are no Exeat weekends and there are no requirements for Guardians.

There are three boarding houses – one for boys and one for girls, and one for sixth form pupils.





## ...and Finally

Thank you for considering The Royal School Armagh for your child. Our aim is to provide its pupils with an education which in its wholeness will enable them to achieve their full potential in academic, social, moral and spiritual terms.

To really get a feel for life at the Royal School Armagh we encourage you to arrange a visit. Term-time is ideal when you can meet with the Headmaster, Bursar, Head of Boarding, Houseparents, teaching staff and pupils in order to get a proper sense of all that the school has to offer.

We understand that a physical visit is not always possible and we would encourage prospective parents and pupils to view the school website: [www.royalschool.com](http://www.royalschool.com).

To arrange a visit, or for further information, please email [info@royalschool.com](mailto:info@royalschool.com) or phone us directly on **+44 (0) 28 37522807**.





# The Royal School Armagh

*"For The Increase of Learning and Good Manners"*

The Royal School, College Hill, Armagh, BT61 9DH  
+44 (0) 28 37522807 | [info@royalschool.com](mailto:info@royalschool.com) | [www.royalschool.com](http://www.royalschool.com)